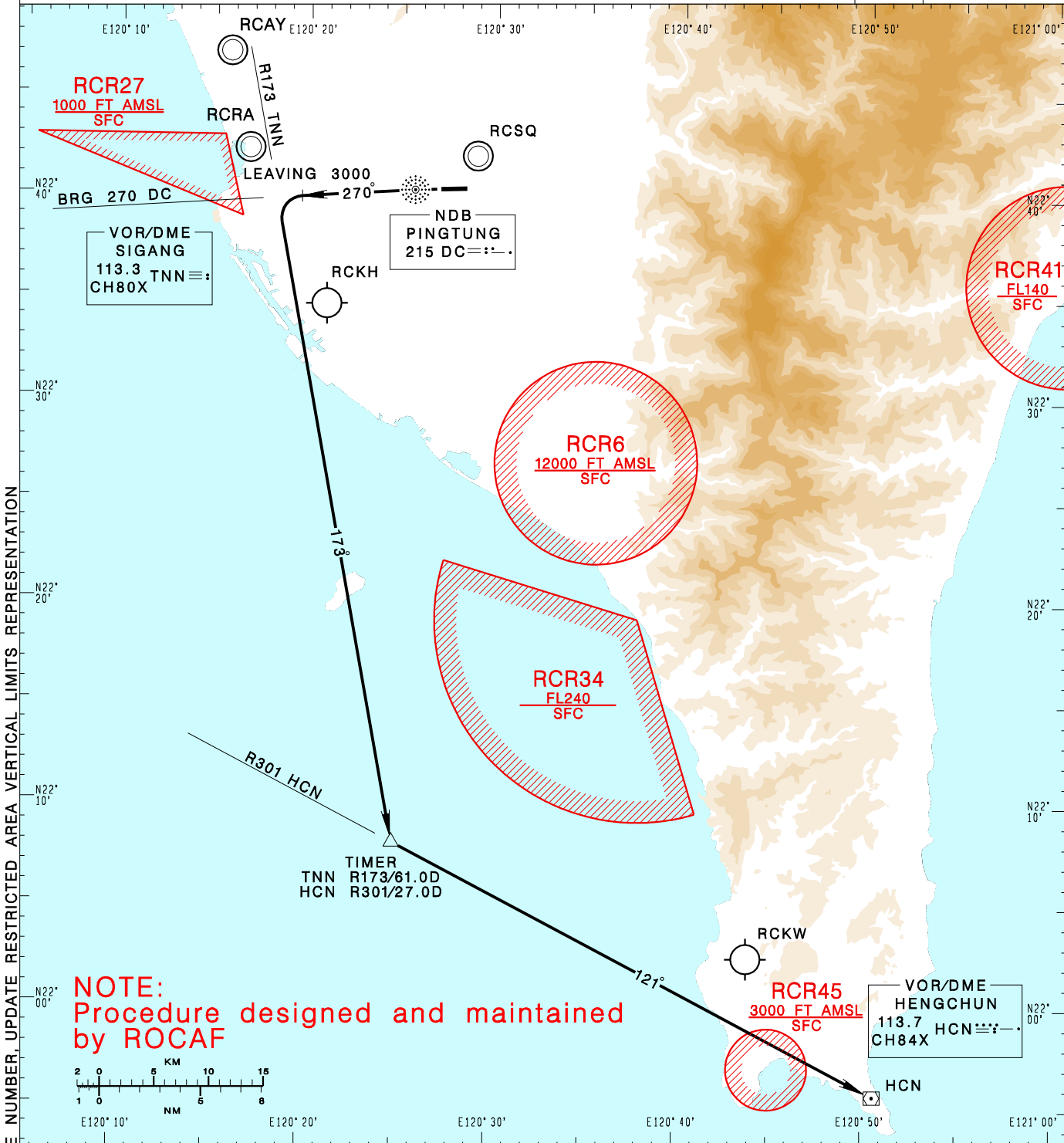


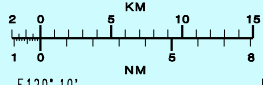
**屏東南機場**  
PINGTUNG SOUTH AD

RCDC SID  
KT2B (RWY27)

KAOSIUNG APP 121.1 124.7 328.7 363.8	PINGTUNG SOUTH TWR 126.18 236.6 315.4	GND 275.8		
Apt Elev: 81'		Trans Level: FL130		Trans Alt: 11,000'
BEARINGS ARE MAGNETIC; DISTANCES ARE NAUTICAL MILES; ELEVATIONS, HEIGHTS IN FEET				



**NOTE:**  
Procedure designed and maintained  
by ROCAF



CHANGES: NEW PAGE NUMBER, UPDATE RESTRICTED AREA, VERTICAL LIMITS REPRESENTATION

**KENTING TWO BRAVO DEPARTURE**  
Maintain RWY HDG to DC. Track DC 270 BRG from DC to 3000ft.  
Turn left intercept TNN R-173 to TIMER. Turn left intercept HCN  
R-301 inbound to HCN to join airway, maintain ATC assigned altitude.

**NOTE**  
CAUTION HIGH TERRAIN  
BEGINNING AT 9NM EAST  
OF THE AERODROME.